

CHOOSE FROM A WIDE RANGE OF DOOR DESIGNS AND CONFIGURATIONS

MAXVIEW Sliding Folding Doors are made to order by Howarth. Please note, doors open inwards or outwards, as required.

MAXVIEW Sliding Folding Doors are available in a wide range of standard configurations and illustrated are the **MAXVIEW** full height timber door design options.

If an alternative configuration is required, please phone our Sales Office on 01469 530577 detailing the exact requirements. Howarth provides a fully comprehensive support service throughout every stage of the project.



As with all sliding folding doors, this product is suitable for weather conditions up to and including 'moderate exposure'.

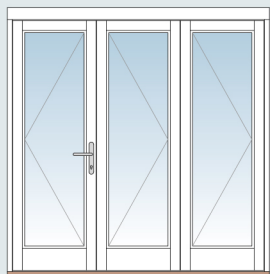
87 **MAXVIEW** FULL HEIGHT TIMBER DOORS



CODE	CODE	CODE	CODE	CODE	CODE	CODE
2XGG	PATTERN 10	WETHERBY	PATTERN GTP	BEVERLEY	PATTERN SA	PATTERN 50

NOTE: **MAXVIEW** products are supplied fully finished and glazed for direct installation. As a result the products are relatively heavy and large. All illustrations above tables show exterior views.

88 MAXVIEW SLIDING FOLDING 3-DOOR CONFIGURATION



Configuration A - open left to right

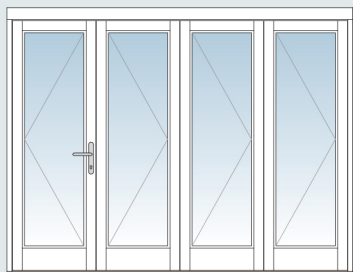


Configuration B - open right to left



Can be made to fit opening of 1893mm to 2643mm wide,
1900mm to 2400mm high.

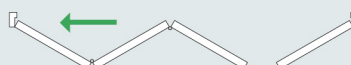
89 MAXVIEW SLIDING FOLDING 4-DOOR CONFIGURATION



Configuration A - open left to right

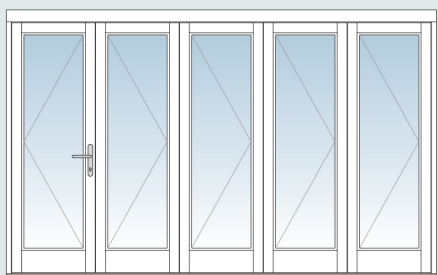


Configuration B - open right to left



Can be made to fit opening of 2496mm to 3496mm wide,
1900mm to 2400mm high.

90 MAXVIEW SLIDING FOLDING 5-DOOR CONFIGURATION



Configuration A - open left to right

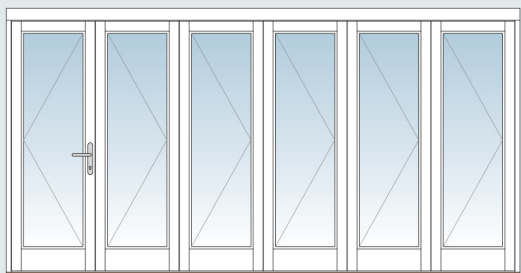


Configuration B - open right to left



Can be made to fit opening of 3099mm to 4000mm wide,
1900mm to 2400mm high.

91 MAXVIEW SLIDING FOLDING 6-DOOR CONFIGURATION



Configuration A - open left to right



Configuration B - open right to left



Can be made to fit opening of 3702mm to 4000mm wide,
1900mm to 2400mm high.

NOTE: MAXVIEW products are supplied fully finished and glazed for direct installation. As a result the products are relatively heavy and large. All illustrations show exterior and plan views.

1. Night ventilators

Night ventilators are not available on **MAXVIEW** Sliding Folding Doors. Where ventilation is required, alternative means of ventilation should be used.

2. Sills

The standard sill width is 171mm to allow the frame to be set back into the cavity to meet Part L Robust Construction Detail requirements. Other available sill width options are 205mm extended sills (at extra cost).

The frame sill is manufactured from hardwood for increased durability. The sills feature drainage channels to allow any trapped water to drain away through the sill.

NOTE: All sills for Howarth door sets are manufactured from Keruing and are designed to be left in a natural condition and should not be decorated as Keruing is not suitable for painting or staining.

3. Finishing options

The **MAXVIEW** Sliding Folding Door range is available in a wide range of factory-applied paint or stain finishes.

NOTE: Frames are generally available in standard RAL colours except black. For availability of other darker shades, please contact the Sales Office on 01469 530577.

4. Combination door and window frames are NOT available

5. Repair kits for fully finished doors

Includes paint or stain, brush, sandpaper, tube of filler and instructions. Will cover 0.5m². (For repairs only).

6. Cavity closers

Available from 75mm up to 150mm in width and are supplied in loose lengths. Brick ties are also available.

7. Furniture and locking mechanisms

A range of furniture options is available. Handles are available in White, Black, Polished Brass effect, Polished Chrome effect and Satin Chrome effect.

Rollers and hinges are available in either Black, Polished Brass effect, Polished Chrome effect or Satin Chrome effect finishes.

Master door leaf is locked using a high security locking mechanism. Slave doors are locked with double shootbolts to the head and sill.

8. Secured by Design

The **MAXVIEW** Sliding Folding Door range can be manufactured to meet PAS24:2012 Secured by Design requirements dependent on size and configuration. For full details please contact our Sales Office on 01469 530577.

9. Cambered heads are not available

10. Perimeter pinch battens are not available

11. Window surrounds are not available

12. Shrink wrapping

Frames are wrapped as standard in a clear cling film which permits visual inspection of the frame upon delivery.

13. Quotation prices

Quotation prices do not include VAT which will be charged at the rate applicable at the time of delivery. Prices quoted are subject to Howarth's Standard terms and conditions of sale.

14. Deliveries

All ancillary purchases are subject to a post and packing charge. Orders of £1,000 or less will be subject to a delivery charge.

NOTE: **MAXVIEW** products are supplied fully finished and glazed for direct installation. As a result the products are relatively heavy and large.

It is the customer's responsibility to:

Ensure the products are off loaded safely, mechanical assistance and a number of workers will be required.

Ensure there is sufficient access to the room to allow these products to be moved into position.

