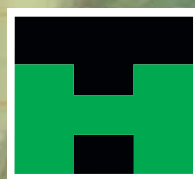


# THE COMPLETE GARDEN & LANDSCAPING COLLECTION

From arches, arbours and decking to decorative aggregates, fencing and paving, your local Howarth Timber & Building Supplies can supply everything you need to make the most of your outdoor space



**HOWARTH  
TIMBER &  
BUILDING  
SUPPLIES**



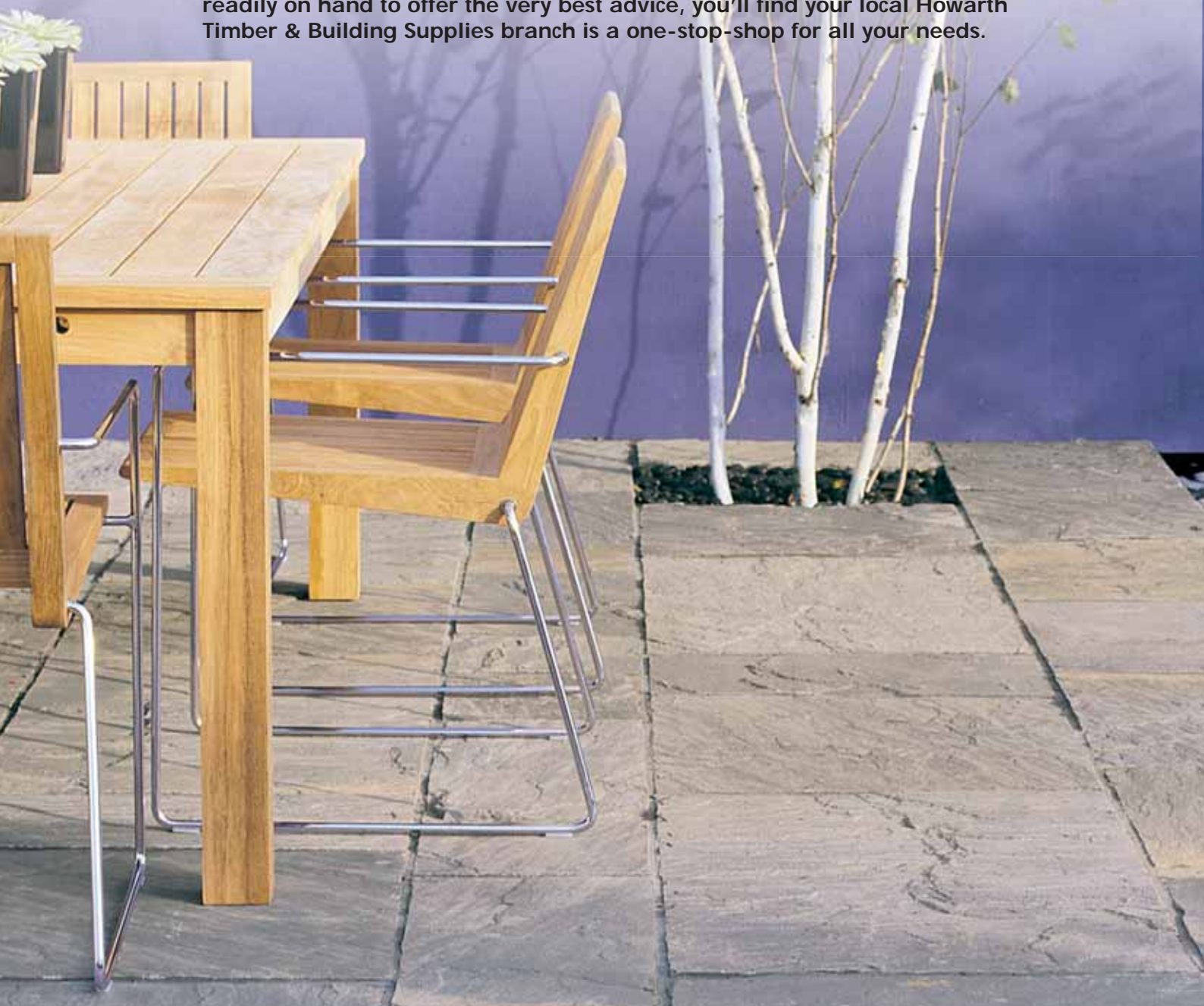


**HOWARTH  
TIMBER &  
BUILDING  
SUPPLIES**

# THE COMPLETE GARDEN & LANDSCAPING COLLECTION

Through a network of 28 branches, Howarth Timber & Building Supplies provides the complete range of quality garden and landscaping products.

With dedicated delivery networks and experienced, specialist-trained staff readily on hand to offer the very best advice, you'll find your local Howarth Timber & Building Supplies branch is a one-stop-shop for all your needs.



Howarth Timber & Building Supplies work closely with market leading manufacturers who share our passion for product quality, outstanding customer service and proven environmental awareness.



STONEMARKET



Marshall's

 **forest**

  
arbordeck®  
the complete decking system

**LUNARDECK**  
A NATURAL SOLUTION TO DECKING THAT LASTS!  






## LANDSCAPING AND DECKING PRODUCTS

- **Ethically sourced natural stone paving**
- **Utility paving**
- **Feature paving kits**
- **Patio kits**
- **Decorative aggregates**
- **Complete decking systems**

Working with renowned market leaders Howarth Timber & Building Supplies can transform your outdoor area with a wide choice of hard landscaping and decking products to meet any design style and aesthetic. From stunning ethically reclaimed natural stone paving, or utility paving perfect for use where cost is the priority, to complete decking systems allowing you to extend your living space quickly and easily outdoors.

Landscaping and decking products from Howarth Timber & Building Supplies - you supply the ideas, we'll supply the solution!

### DECKING. CHOOSE THE COMPLETE, GUARANTEED SYSTEM

**arbordeck**  
the complete decking system

Arbordeck provides a complete decking system including boards, joists, a choice of balustrades, fittings and a range of finishes for both commercial and domestic applications.

Manufactured to the highest quality standards, Arbordeck is one of the few manufacturers to offer a 15-year performance guarantee\* against decay and insect attack.







## GARDEN PRODUCTS AND ACCESSORIES

- Traditional fencing & trellis
- Pergolas & planters
- Nordic decorative screens
- Garden structures
- Landscape lumber
- Climbers & planters
- Garden gates

Howarth Timber & Building Supplies is pleased to offer a wide selection of solutions for the garden. From arches, arbours, decorative trellis, planters and pergolas to ornate garden structures, climbers and garden gates - Howarth Timber & Building Supplies has it all.

Quality is provided as standard, the majority of our garden range is pressure treated, carrying a 15 year guarantee against rot. This means they will never require any further treatment - saving time and money and helping the environment by reducing the amount of chemicals used annually.







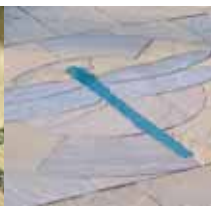
# OPEN THE DOOR TO THE COMPLETE GARDEN AND LANDSCAPE RANGE...



*Ethical paving*



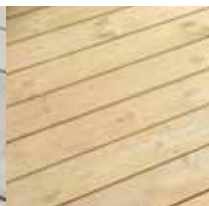
*Utility paving*



*Feature paving kits*



*Patio kits*



*Decking*



*Thermal decking*



*Aggregates*



*Fencing*



*Climber & planters*



*Arbours*



*Sheds & stores*



*Gazebos*



Your local Howarth Timber & Building Supplies branch offers a wealth of products, services, knowledge and offers; all helping you get the job done quickly, easily and cost-effectively.

#### North West

**Accrington.** Market Street, Church, Accrington BB5 0DN.  
Tel. 01254 380 500 Fax. 01254 380 501 Email. [sales.accrington@howarth-timber.co.uk](mailto:sales.accrington@howarth-timber.co.uk)

**Ashton.** Moss Sawmills, Katherine Street, Ashton-Under-Lyne, Lancashire OL7 0AG.  
Tel. 0161 330 1634 Fax. 0161 339 7618 Email. [sales.ashton@howarth-timber.co.uk](mailto:sales.ashton@howarth-timber.co.uk)

**Blackburn.** Bruce St, off Harwood St, Blackburn BB1 3EE.  
Tel. 01254 699 696 Fax. 01254 699 306 Email. [sales.blackburn@howarth-timber.co.uk](mailto:sales.blackburn@howarth-timber.co.uk)

**Burnley.** Queensgate Sawmills, Pratt St, Burnley BB10 1RZ.  
Tel. 01282 426 241 Fax. 01282 421 779 Email. [sales.burnley@howarth-timber.co.uk](mailto:sales.burnley@howarth-timber.co.uk)

**Bury.** Bright Street, Bury, Lancashire BL9 6AQ.  
Tel. 0161 761 6416 Fax. 0161 764 8156 Email. [sales.bury@howarth-timber.co.uk](mailto:sales.bury@howarth-timber.co.uk)

**Darwen.** Units 1&2 Spring Vale Road, Darwen BB3 2ES.  
Tel. 01254 873 552 Fax. 01254 775 92 Email. [sales.darwen@howarth-timber.co.uk](mailto:sales.darwen@howarth-timber.co.uk)

**Manchester.** Glasshouse St, Oldham Road, Miles Platting, Manchester M4 5HE.  
Tel. 0161 834 8505 Fax. 0161 839 0161 Email. [sales.manchester@howarth-timber.co.uk](mailto:sales.manchester@howarth-timber.co.uk)

**Oldham.** Medlock Sawmills, Shaw Road, Oldham OL1 3LJ.  
Tel. 0161 620 2128 Fax. 0161 620 9527 Email. [sales.oldham@howarth-timber.co.uk](mailto:sales.oldham@howarth-timber.co.uk)

**Rochdale.** Milnrow Road, Rochdale, Lancashire OL16 2AA.  
Tel. 01706 710 962 Fax. 01706 345 481 Email. [sales.rochdale@howarth-timber.co.uk](mailto:sales.rochdale@howarth-timber.co.uk)

**Sale.** Glebelands Road, Sale, Cheshire M33 6LB.  
Tel. 0161 973 9578 Fax. 0161 905 1910 Email. [sales.sale@howarth-timber.co.uk](mailto:sales.sale@howarth-timber.co.uk)

#### Yorks & Lincs

**Barnsley.** Stocks Lane, off Summer Lane, Barnsley S75 2BL.  
Tel. 01226 289 494 Fax. 01226 244 729 Email. [sales.barnsley@howarth-timber.co.uk](mailto:sales.barnsley@howarth-timber.co.uk)

**Bradford.** Park Works, Hare Park Lane, Liversedge, Bradford WF15 8ER.  
Tel. 01274 871 411 Fax. 01274 851 246 Email. [sales.bradford@howarth-timber.co.uk](mailto:sales.bradford@howarth-timber.co.uk)

**Dewsbury.** Hirst Mills, Hirst Road, Dewsbury WF13 2AF.  
Tel. 01924 462 186 Fax. 01924 459 879 Email. [sales.dewsbury@howarth-timber.co.uk](mailto:sales.dewsbury@howarth-timber.co.uk)

**Grimsby.** Eastgate, Grimsby DN32 9BA.  
Tel. 01472 361 621 Fax. 01472 251 906 Email. [sales.grimsby@howarth-timber.co.uk](mailto:sales.grimsby@howarth-timber.co.uk)

**Leeds.** Prince Edward Works, Pontefract Lane, Cross Green, Leeds LS9 0RA.  
Tel. 0113 2000 100 Fax. 0113 2000 127 Email. [sales.leeds@howarth-timber.co.uk](mailto:sales.leeds@howarth-timber.co.uk)

**Malton.** Showfield Ind Estate, Showfield Lane, Malton YO17 6BT.  
Tel. 01653 697 776 Fax. 01653 696 701 Email. [sales.malton@howarth-timber.co.uk](mailto:sales.malton@howarth-timber.co.uk)

**Richmond.** Borough Road, Gallowfields Trading Estate, Richmond, North Yorks DL10 4SX.  
Tel. 01748 850 600 Fax. 01748 850 820 Email. [sales.richmond@howarth-timber.co.uk](mailto:sales.richmond@howarth-timber.co.uk)

**Scunthorpe.** Warren Road, Scunthorpe DN15 6XH.  
Tel. 01724 860 325 Fax. 01724 280 979 Email. [sales.scunthorpe@howarth-timber.co.uk](mailto:sales.scunthorpe@howarth-timber.co.uk)

**Thorne.** South Parade, Thorne DN8 5DY.  
Tel. 01405 813 515 Fax. 01405 740 338 Email. [sales.thorne@howarth-timber.co.uk](mailto:sales.thorne@howarth-timber.co.uk)

**Wakefield.** Doncaster Road, Wakefield WF1 5DW.  
Tel. 01924 372 291 Fax. 01924 365 125 Email. [sales.wakefield@howarth-timber.co.uk](mailto:sales.wakefield@howarth-timber.co.uk)

**York.** Leeman Road, York YO26 4ZH.  
Tel. 01904 629 931 Fax. 01904 620 613 Email. [sales.york@howarth-timber.co.uk](mailto:sales.york@howarth-timber.co.uk)

#### Midlands

**Corby.** Geddington Road, Corby NN18 8ET.  
Tel. 01536 407 079 Fax. 01536 402 404 Email. [sales.corby@howarth-timber.co.uk](mailto:sales.corby@howarth-timber.co.uk)

**Derby.** Pentagon Island Timber Yard, 12 Old Nottingham Rd, Derby DE1 3QT.  
Tel. 01332 286 233 Fax. 01332 291 874 Email. [sales.derby@howarth-timber.co.uk](mailto:sales.derby@howarth-timber.co.uk)

**Mansfield.** Millennium Timber Yard, 204 Chesterfield Road North, Mansfield NG19 7JG.  
Tel. 01623 624 455 Fax. 01623 627 741 Email. [sales.mansfield@howarth-timber.co.uk](mailto:sales.mansfield@howarth-timber.co.uk)

**Newcastle.** Barracks Road, Newcastle-under-Lyme, Staffordshire ST5 1AW.  
Tel. 01782 715 900 Fax. 01782 717 264 Email. [sales.newcastle@howarth-timber.co.uk](mailto:sales.newcastle@howarth-timber.co.uk)

#### London & South East

**Dartford.** Hylthe Street Lower, Dartford, Kent DA1 1BN.  
Tel. 01322 286 844 Fax. 01322 286 823 Email. [sales.dartford@howarth-timber.co.uk](mailto:sales.dartford@howarth-timber.co.uk)

**London.** 115 Endwell Road, Brockley Cross, London SE4 2LY.  
Tel. 020 8691 6237 Fax. 020 8692 9571 Email. [sales.london@howarth-timber.co.uk](mailto:sales.london@howarth-timber.co.uk)

**Tottenham.** 1 Bruce Grove, London N17 6RA.  
Tel. 020 8808 4337 Fax. 020 8808 4707 Email. [sales.tottenham@howarth-timber.co.uk](mailto:sales.tottenham@howarth-timber.co.uk)

## EVERYTHING YOU NEED TO FINISH THE JOB...



### Hand Tools Saws, chisels, ...hammers



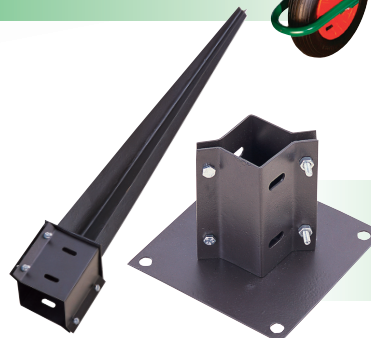
### Powertools Drills, saws, nailers, sanders...



### Innovations ACO GroundGuard. Award-winning ground reinforcement system...



### General Spirit levels, wheel barrows...



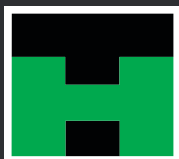
### Accessories Fence spikes, bases, cement...

## WE'RE COMMITTED TO THE ENVIRONMENT



By buying products with the FSC label you are supporting the growth of responsible forest management worldwide. The global benchmark for responsible forest management.

©1996 FSC AC



**HOWARTH  
TIMBER &  
BUILDING  
SUPPLIES**

For further details please contact your local branch of Howarth Timber & Building Supplies:

Email:  
[info@howarth-timber.co.uk](mailto:info@howarth-timber.co.uk)

Visit our website:  
[www.howarth-timber.co.uk](http://www.howarth-timber.co.uk)