



**HOWARTH TIMBER  
& BUILDING SUPPLIES**

# The Ultimate Flood Defence





## Protecting homes & businesses with flood defence systems



### WaterWall

The WaterWall System has been developed as a quick and convenient method of "building" a water tight flood barrier that can be easily erected in the event of a flood and also dismantled and stored away when the danger has passed.

Suitable for installation to both residential and commercial property, WaterWall makes use of two permanently-fixed vertical channels fitted either side of the opening to be protected, along with pre-installed unobtrusive ground fixtures to allow the demountable post system to be put in place.

Aluminium panels are then dropped into position so that, when deployed, a barrier up to 1200mm high for any required span in excess of 1500mm wide is ready to protect your property.



**we are**  
**FLOOD DEFENCES**

EASY TO INSTALL

EASY TO TAKE DOWN

EASY TO STORE





## WaterDoor

The WaterDoor System is, in effect, the “baby brother” of the WaterWall and has been developed to provide the same quick and convenient method of “building” a water tight flood barrier.

The WaterDoor System is specifically designed for the smaller domestic residential and commercial doorways.

Like WaterWall, the WaterDoor System makes use of two permanently-fixed vertical channels fitted either side of the doorway.

This then allows the Aluminium panels to be dropped into position so that when deployed, a barrier up to 1200mm high for any required span up to 1500mm wide is ready to protect your property.



The WaterWall & WaterDoor Systems exceeds the BSI British Standard PAS 1188–2014 on allowable leakage rates for demountable flood defence systems.

*Data has been gathered by rigorous physical measurement within in-house testing facility.*

Delivery times can vary depending on the product ordered and quantity required. Typically, most WaterDoors are available within 2 working weeks and WaterWalls are available within 3 working weeks.

**POWDER COATING AVAILABLE**

*much more than just timber*



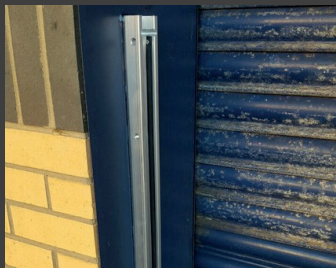


## COMPONENT PARTS



### Ground Insert & Post Cap

The 120mm diameter ground insert acts as a socket for WaterWall installations involving the requirement for a demountable post. When the barrier is not deployed a Post Cap seal is used to protect the ground insert.



### Wall Rails

The permanently fixed wall rails are available in two forms, either "reveal fix" which means fixing in between the reveals/brickwork of the doorway or "face fix" which means fixing onto the face of the brickwork.



### Panel Extrusion

Each individual panel is 300mm high x 20mm thick and is supplied with rubber seals to prevent water ingress.



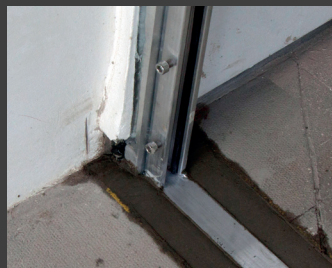
### Powder Coating

To make the components as unobtrusive as possible, Caro Flood Defence Systems offer the facility to powder coat to any RAL colour not only the Wall Rails, but also the Aluminium Panels if desired.



### Demountable Post

The demountable post is required for WaterWall barriers that span in excess of 2000mm wide. The component is deployed into an unobtrusive Ground Insert, using the Course Thread connector.



### Ground Strips

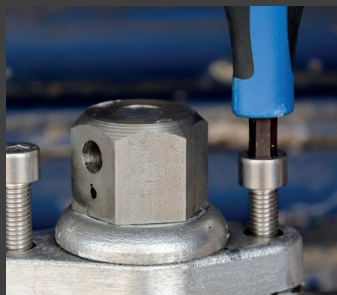
The Ground Strip can be used to give added security/sealability to the system in areas of particularly rough or porous ground finishes. This can be supplied pre-fabricated/welded to the Fixed Wall Posts or loose.



### Wall Rail Covers

Manufactured in Aluminium, the Covers are designed to protect the permanently-fixed Wall Rails and to hide the rails from view when the barrier is not in use. The covers can also be powder coated in any RAL colour to match the surroundings.

## SECURE COMPRESSION & SEALING MECHANISMS



WaterDoor & Water Wall both exceeds the BSI British Standard PAS 1188-2014 on allowable leakage rates for demountable flood defence systems. Data has been gathered by rigorous physical measurement within in-house testing facility.