



**HOWARTH TIMBER
& BUILDING SUPPLIES**

we are

CLADDING

arbor**Clad**

ORDER ONLINE 24/7
howarth-timber.co.uk

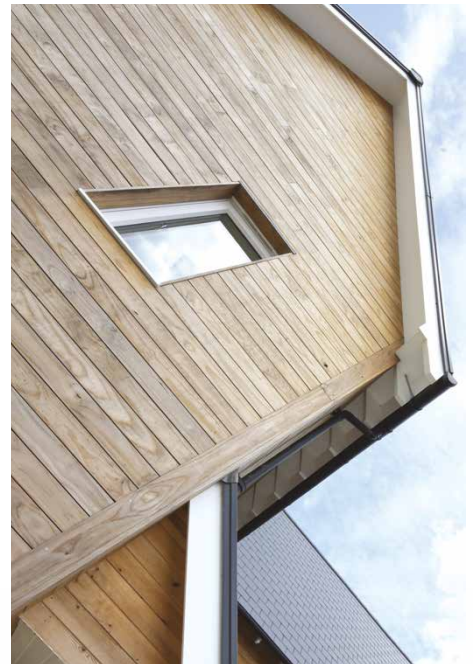
much more than just timber



we are CLADDING

- 4 Traditional Cladding
- 8 Thermo Cladding

arbor**Clad**



At Howarth, we offer one of the most comprehensive ranges of timber cladding available on the UK market today

Ideal for commercial, domestic and refurbishment projects, ArborClad cladding range can help transform a project from 'everyday' into a dramatic design statement.

We work regularly with architects, local builders, renovators, major contractors and national house builders to ensure that the product specified is the right product for the right situation and at the right price.

Chosen specifically for their environmental qualities, Chain of Custody is commonplace across the entire range and is available upon request.

We've got over 180 years of experience as a timber and building supplies merchant, so you can rest assured you're in safe hands.

If we can be of help in any way, please get in touch, we are more than happy to assist.

Nicholas Howarth
Managing Director

COMMITTED TO THE ENVIRONMENT

The ArborClad timber cladding range is available with full Chain of Custody certification, providing compliance with government specification for timber from legal and well-managed sources, as well as meeting the requirements of the construction industry's independent third party audit organisations. If this is a requirement please stipulate at time of ordering.



FULL CHAIN
OF CUSTODY



TIMBER YOU
CAN TRUST





Traditional Cladding

Our traditional cladding range is a selection of the most popular timber species currently used today in the UK market for exterior cladding.

- ✓ Cost-effective range of durable, resilient traditional claddings
- ✓ Environmentally focused
- ✓ Suitable for a range of applications
- ✓ Treated Redwood, Larch & Western Red Cedar species
- ✓ Bespoke profiles and other species also available
- ✓ Can be fire treated and/or finished with a stain or paint if required.

arbor**Clad**

TRADITIONAL

↓ Shiplap



Western Red Cedar

Western Red Cedar comes in a variety of rich colours, ranging from cream, warm brown to salmon pink. Cedar creates a clean look; suiting projects from traditional, to contemporary architecture.

Nominal 25 x 150mm



SHIPLAP Finished size 18 x 125mm face cover



PTGV Finished size 18 x 137mm face cover



OFFSET Finished size 18 x 120mm face cover



CHANNEL GROOVE Finished size 18 x 125mm face cover

PSE Available in various sizes

FOR MORE INFORMATION PLEASE CALL 01924 462186



ADVICE ON FIRE
RESISTANCE



TECHNICAL
GUIDANCE



SAMPLE
SERVICE



CORNER PROFILES
AVAILABLE

MATERIAL DENSITY:

330-410 kg/m³

(subject to moisture content)

DURABILITY:

Durable

NOMINAL SIZES AVAILABLE:

25 x 100mm

25 x 150mm

(random lengths)

TRADITIONAL

← Shiplap



Redwood

Machined from high quality pressure treated Scandinavian Redwood. Our Redwood cladding is ideal for exterior walls such as sheds, summerhouses, garden offices, play houses and more!

Requires treatment for external use

Nominal 25 x 150mm



SHIPLAP Finished size 18 x 125mm face cover



PTGV Finished size 18 x 137mm face cover



OFFSET Finished size 18 x 120mm face cover



CHANNEL GROOVE Finished size 18 x 125mm face cover

PSE Available in various sizes

FOR MORE INFORMATION PLEASE CALL 01924 462186



ADVICE ON FIRE
RESISTANCE



TECHNICAL
GUIDANCE



SAMPLE
SERVICE



CORNER PROFILES
AVAILABLE

MATERIAL DENSITY:

580-560 kg/m³
(subject to moisture content)

DURABILITY:

Non Durable

NOMINAL SIZES AVAILABLE:

25 x 125mm
25 x 150mm
(random lengths)

Sizes shown are finished unless otherwise stated. Subject to stock availability at the time of order. Timber cladding, when left in its natural state, will oxidise and turn a silver grey colour over time, due to the effects of exposure to sunlight.

↓ Offset PSE →

Larch

Larch has colour tones from pale reddish-brown to cream. Once weathered the colour will be a subtle grey. Straight grained, with tight annual rings and relatively few knots, give an attractive contemporary feel.

Nominal 25 x 150mm



SHIPLAP Finished size 18 x 125mm face cover



PTGV Finished size 18 x 137mm face cover



OFFSET Finished size 18 x 120mm face cover



CHANNEL GROOVE Finished size 18 x 125mm face cover

PSE Available in various sizes

FOR MORE INFORMATION PLEASE CALL 01924 462186



ADVICE ON FIRE
RESISTANCE



TECHNICAL
GUIDANCE



SAMPLE
SERVICE



CORNER PROFILES
AVAILABLE

MATERIAL DENSITY:

570-650 kg/m³
(subject to moisture content)

DURABILITY:

**Moderately
Durable**

NOMINAL SIZES AVAILABLE:

**25 x 125mm
25 x 150mm**
(random lengths)

Sizes shown are finished unless otherwise stated. Subject to stock availability at the time of order. Timber cladding, when left in its natural state, will oxidise and turn a silver grey colour over time, due to the effects of exposure to sunlight.



Thermo Cladding

Thermally treated cladding offers improved stability and durability thanks to its minimal moisture content, ensuring your cladding will stand the test of time.

- ✓ Softwood and hardwood options
- ✓ Improved stability, durability and performance
- ✓ Increased weather resistance
- ✓ Chemical-free treatment applied through the full board section, virtually eliminating rot and insect attack
- ✓ Uniformity of product colour in its natural state
- ✓ More even weathering over time than traditional timber claddings
- ✓ Can be fire treated and/or finished with a stain or paint if required

arbor**Clad**

← Thermo
Clear Pine
Offset



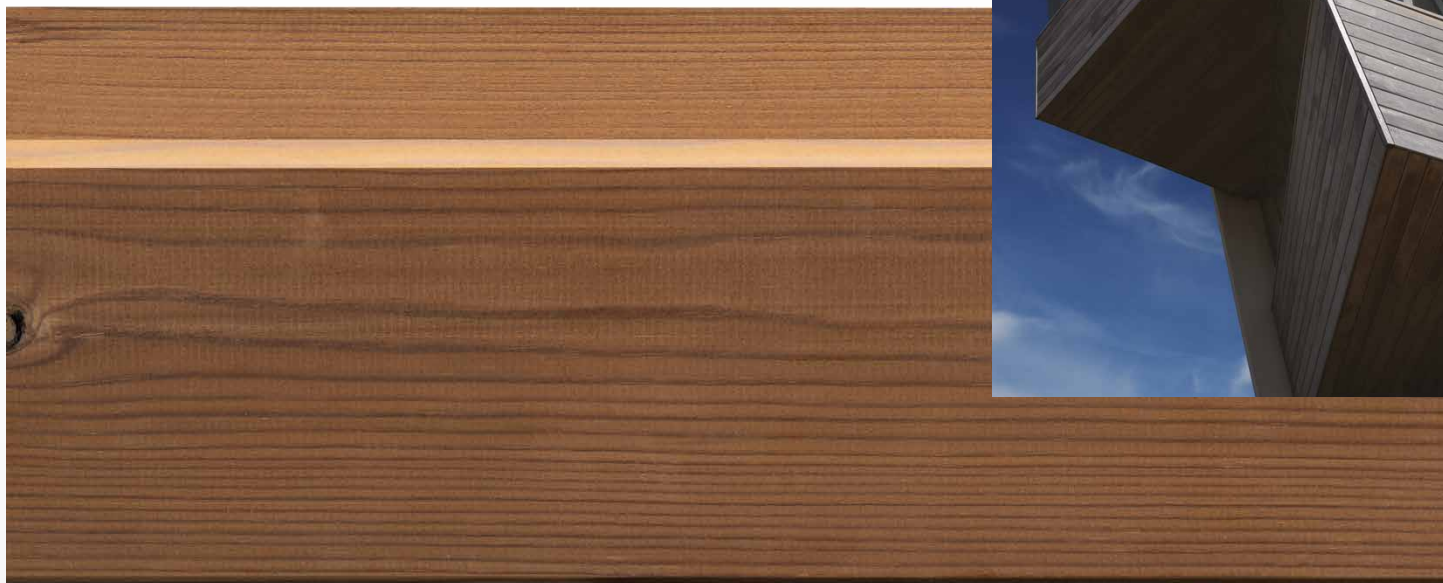
THERMAL TREATMENT

The thermal treatment process consists of heating wood to temperatures (within a range of 160°C to 215°C) exceeding its spontaneous combustion temperature and changing the natural properties with the water vapour present having a protective function.

A natural process, the varying temperatures, varying treatment duration and varying drying techniques require no chemical additives and impart new properties to the treated wood.

Through the heat treatment applied, the timber is less prone to absorb or lose moisture, helping to restrict the potential for swelling, shrinkage or distortion.

The wood also acquires a beautiful brown colour and its velvet-like surface is pleasant to the touch. At its best, the wood possesses nuances of antique and fine wood shades that bring warmth to any project.



↓ Shiplap



Thermo D Redwood

ThermoD Redwood is a dimensionally stable and long-lasting wood that is ideal for any outdoor cladding project. It is completely free from chemical additives and is appropriate for a wide range of applications.

Nominal 25 x 150mm



SHIPLAP Finished size 18 x 125mm face cover



PTGV Finished size 18 x 137mm face cover



OFFSET Finished size 18 x 120mm face cover



CHANNEL GROOVE Finished size 18 x 125mm face cover

PSE Available in various sizes

FOR MORE INFORMATION PLEASE CALL 01924 462186



ADVICE ON FIRE
RESISTANCE



TECHNICAL
GUIDANCE



SAMPLE
SERVICE



CORNER PROFILES
AVAILABLE

MATERIAL DENSITY:

380-460 kg/m³
(subject to moisture content)

DURABILITY:

Durable

NOMINAL SIZES AVAILABLE:

25 x 125mm
25 x 150mm
(random lengths)

Sizes shown are finished unless otherwise stated. Subject to stock availability at the time of order. Timber cladding, when left in its natural state, will oxidise and turn a silver grey colour over time, due to the effects of exposure to sunlight.

Offset →



Thermo D Fraké

Frake is a West African hardwood that is beautiful a rich walnut/chocolate brown colour. Frake cladding weathers relatively quickly to a beautiful silver grey.

FOR MORE INFORMATION PLEASE CALL 01924 462186



ADVICE ON FIRE
RESISTANCE



TECHNICAL
GUIDANCE



SAMPLE
SERVICE



CORNER PROFILES
AVAILABLE

Sizes shown are finished unless otherwise stated. Subject to stock availability at the time of order. Timber cladding, when left in its natural state, will oxidise and turn a silver grey colour over time, due to the effects of exposure to sunlight.

Nominal 25 x 150mm



SHIPLAP Finished size 18 x 125mm face cover



PTGV Finished size 18 x 137mm face cover



OFFSET Finished size 18 x 120mm face cover



CHANNEL GROOVE Finished size 18 x 125mm face cover

PSE Available in various sizes

MATERIAL DENSITY:

460-540 kg/m³
(subject to moisture content)

DURABILITY:

Durable

NOMINAL SIZES AVAILABLE:

25 x 150mm
(random lengths)



Thermo D Ash

ThermoD Ash is a long-lasting hardwood cladding. It is a beautiful brown colour with many growth rings and a wavy texture that gives a distinctive appearance.

Nominal 25 x 150mm



SHIPLAP Finished size 18 x 125mm face cover



PTGV Finished size 18 x 137mm face cover



OFFSET Finished size 18 x 120mm face cover



CHANNEL GROOVE Finished size 18 x 125mm face cover

PSE Available in various sizes

FOR MORE INFORMATION PLEASE CALL 01924 462186



ADVICE ON FIRE RESISTANCE



TECHNICAL GUIDANCE



SAMPLE SERVICE



CORNER PROFILES AVAILABLE

MATERIAL DENSITY:

550-630 kg/m³

(subject to moisture content)

DURABILITY:

Durable

NOMINAL SIZES AVAILABLE:

25 x 150mm

(random lengths)

Sizes shown are finished unless otherwise stated. Subject to stock availability at the time of order. Timber cladding, when left in its natural state, will oxidise and turn a silver grey colour over time, due to the effects of exposure to sunlight.



Thermo D Clear Pine

ThermoD Clear Pine is an attractive and durable hardwood cladding. Its warm brown colour and smooth texture offers a beautiful natural look. Available in your choice of profile.

Nominal 25 x 150mm



SHIPLAP Finished size 18 x 125mm face cover



PTGV Finished size 18 x 137mm face cover



OFFSET Finished size 18 x 120mm face cover



CHANNEL GROOVE Finished size 18 x 125mm face cover

PSE Available in various sizes

FOR MORE INFORMATION PLEASE CALL **01924 462186**



**ADVICE ON FIRE
RESISTANCE**



**TECHNICAL
GUIDANCE**



**SAMPLE
SERVICE**



**CORNER PROFILES
AVAILABLE**

MATERIAL DENSITY:

450-530 kg/m³
(subject to moisture content)

DURABILITY:

Durable

NOMINAL SIZES AVAILABLE:

25 x 150mm
(random lengths)

Sizes shown are finished unless otherwise stated. Subject to stock availability at the time of order. Timber cladding, when left in its natural state, will oxidise and turn a silver grey colour over time, due to the effects of exposure to sunlight.



ORCHARD CARE HOME

ArborClad Thermo Clear Pine

The £32 million Richmond Witney Retirement Village was designed by PRC Architecture and built by BAM. The design called for a village atmosphere, with architectural features that reflect the local vernacular.

ArborClad Clear Pine cladding was specified because of its attractive appearance and sustainability benefits, and is incorporated across entire elevations on selected buildings and as a unifying factor on others. As well as supplying the Clear Pine cladding, Howarth Timber machined to profile and finished the corner moulds and fascias, providing a streamlined service.

The thermally modified timber cladding is virtually knot-free, while the non-chemical treatment makes the cladding resistant to moisture and means that it won't warp or swell and will weather evenly to a clean silver-grey colour.



MARKS & SPENCER'S DISTRIBUTION CENTRE

ArborClad Thermal D Redwood

Marks and Spencer's multi-million pound northern distribution centre in Bradford, West Yorkshire, has been completed with a facade of high performance thermally treated Knotty Pine cladding.





FLEETWOOD CHANGING HUTS

ArborClad Thermo Fraké cladding

Howarth Timber & Building Supplies helped to create 10 new beach chalets on Fleetwood promenade that share the same construction materials as the area's local observation tower.

The colourful chalets have been constructed using fraké timber, which matches the wood - also supplied by Howarth - used to build the nearby RIBA award winning Rossall Point observation tower, pictured right.

Fraké timber is a premium heat-modified timber species that is gaining popularity in cladding projects due to its durability and ease of use.



The basic rules for installing external cladding

SOFTWOOD

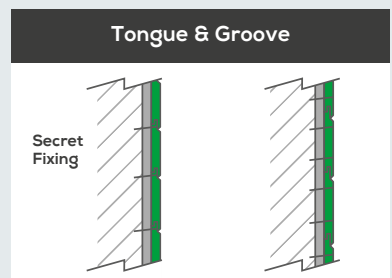
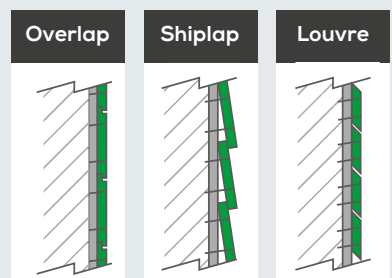
Stainless steel annular ring shank/round head nails are appropriate for fixing softwood cladding:

- The nail length is generally minimum 50mm or 2.5 times the thickness of the board being fixed whichever is the greater and should be punched slightly below the wood's surface.
- Boards over 100mm wide should have double fixings.
- Make sure that butt joints always meet on sufficient batten support width.
- It's preferable to use stainless steel nails for all species but especially those with a high tannin content, and they are essential for timbers installed 'green'. By using Stainless Steel this avoids permanent staining due to the reaction of the tannin on mild steel or galvanised nails.
- If using battens*, we recommend a minimum size of 38x50mm (finished size).

HARDWOOD

Stainless steel screws/annular ring shank nails are the preferred method of fixing for hardwood boards. Stainless steel screws are preferable, and essential for timbers installed 'green':

- Slight over-drilling of the screw holes will allow for any movement in the wood and prevent splits. Countersinking screws is also recommended.
- Where 'green' wood is used, it may be necessary to fit washers to the screws to maintain the fixing security. This can become a design feature.
- Metal clips, which also provide a 'secret fix' effect, may also be considered. Screw fixings should be minimum 40mm or half the width of the board, whichever is the great, from the end of the boards to avoid splitting.



Fire regulations are in constant review, for the most up to date information please visit the following websites:
TTF, Trada, TDCA, www.gov.uk



HOWARTH TIMBER & BUILDING SUPPLIES



Timber & Sheet Materials

ACCRINGTON

Old Railway Yard, Market Street,
Church, Accrington, BB5 0DN
tel: 01254 380500

ASHTON

Moss Sawmills, Katherine Street,
Ashton-under-Lyne, OL7 0AG
tel: 0161 3301634

BARNSELEY

Stocks Lane, off Summer Lane,
Barnsley, S75 2BL
tel: 01226 289494

BLACKBURN

Bruce Street, off Harwood Street,
Blackburn, BB1 3EE
tel: 01254 699696

BRIGHOUSE

Wakefield Road, Brighouse, HD6 1PE
tel: 01484 503950

BURNLEY

Queensgate Sawmills, Pratt Street,
Burnley, BB10 1RZ
tel: 01282 426241

BURY

Bright Street, Bury, BL9 6AQ
tel: 0161 7616416

BURY ST EDMUNDS

Hollow Road, Bury St Edmunds, IP32 7QW
tel: 01284 250160

CHEADLE

Countess Ave, Cheadle Hulme,
Cheadle, SK8 6OS
tel: 0161 486 1417

CHESTER

Broughton Works, Chester Road,
Bretton, Chester, CH4 0DH
tel: 01244 660351

COTTINGHAM

Station Road, Cottingham, HU16 4LL
tel: 01482 875595

CORBY

Geddington Road, Corby, NN18 8ET
tel: 01536 407079

DARTFORD

Nelson Works, Hythe Street Lower,
Dartford, DA11 1BN
tel: 01322 286844

DARWEN

Units 1 & 2, Spring Vale Road,
Darwen, BB3 2ES
tel: 01254 873552

DERBY

Pentagon Island Timber Yard,
12 Old Nottingham Rd, Stores Rd,
Derby, DE1 3QT
tel: 01332 360233

DEWSBURY

Hirst Mills, Hirst Road, Dewsbury, WF13 2AF
tel: 01924 462186

DONCASTER

Churchill Business Park,
Churchill Road, Doncaster, DN1 2TF
tel: 01302 763090

ENFIELD

1-23 Hertford Rd, Enfield, EN3 5JD
tel: 020 8808 4337

GRIMSBY

Eastgate, Grimsby, DN32 9BA
tel: 01472 361621

HARROGATE

Claro Road, Harrogate,
HG1 4AU
tel: 01423 637000

LEEDS

Prince Edward Works,
Cross Green Ind' Estate,
Pontefract Lane, Leeds, LS9 0RA
tel: 0113 200 0100

LONDON

115 Endwell Road, Brockley Cross,
London, SE4 2PE
tel: 020 8691 6237

MALTON

Showfield Ind Estate, Showfield Lane,
Malton, YO17 6BT
tel: 01653 697776

MANCHESTER

Glasshouse Street, Oldham Road,
Miles Platting, Manchester M4 5HD
tel: 0161 839 6827

MANSFIELD

Millennium Timber Yard, 204 Chesterfield,
Road North, Mansfield, NG19 7JG
tel: 01623 624455

NEWCASTLE -U- LYME

Barracks Road, Newcastle under Lyme,
ST5 1AW
tel: 01782 715900

NORTHWICH

Chester Way, Northwich,
Cheshire, CW9 5FZ

OLDHAM

Medlock Sawmills, Shaw Road,
Oldham, OL1 3LJ
tel: 0161 6202128

ROCHDALE

Milnrow Road, Rochdale,
OL16 2AA
tel: 01706 710962

SALE

Glebelands Road, Sale, M33 6LB
tel: 0161 9739578

SCUNTHORPE

Warren Road, Scunthorpe, DN15 6XH
tel: 01724 860325

THORNE

South Parade, Thorne, DN8 5DY
tel: 01405 813515

WAKEFIELD

Doncaster Road, Wakefield, WF1 5DW
tel: 01924 372291

YORK

Leeman Road, York, YO26 4ZH
tel: 01904 629931

We are



**Timber &
Sheet Materials**



**Building Materials
& Drainage**



**Garden &
Landscaping**



**Doors, Joinery
& Flooring**



**Plasterboard
& Insulation**



**Tools, Fixings
& Finishings**



**Kitchens &
Bathrooms**



**Plumbing
& Heating**

Images are used for illustrative purposes, all colours are reproduced digitally as accurately as current technology will allow. All errors and omissions excepted.
Timber is a natural product and can vary slightly in colour or texture

ORDER ONLINE 24/7
howarth-timber.co.uk

much more than just timber