



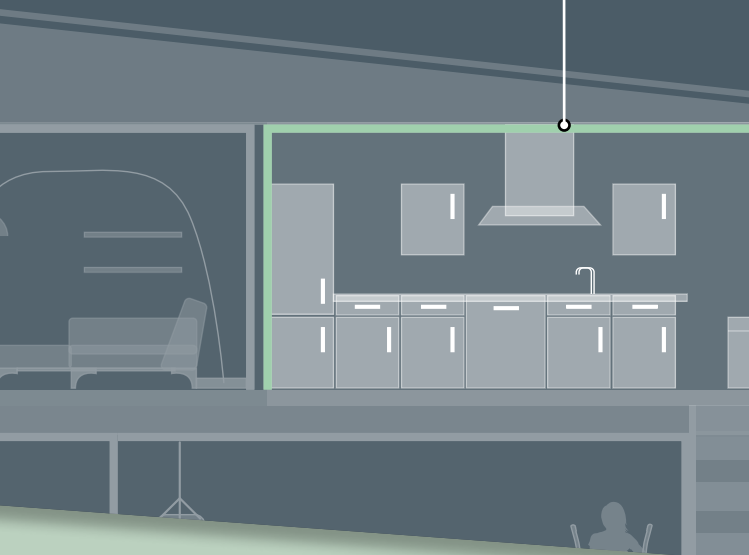
HOW TO:

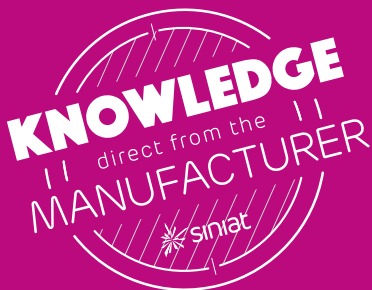
BOARD ROOMS WITH HIGH HUMIDITY AND CONDENSATION

WITH PLASTERBOARD



GTEC MOISTURE
BOARD





MOISTURE AND HUMIDITY

Kitchens, utility rooms and cloak rooms are areas of high humidity. Modern appliances, cooking and the use of hot water all create increased levels of moisture in a room.

The best way to ensure a lasting finish is to use a plasterboard designed specifically for this type of application.

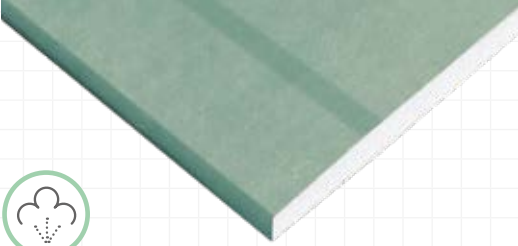


IDEAL FOR KITCHENS AND UTILITY ROOMS



USED IN CLOAK ROOMS AND BATHROOMS

GTEC MOISTURE BOARD



Moisture Board has less than 10% water absorption compared to standard plasterboard which is greater than 25%, so it is perfect for walls and ceilings in higher humidity areas.

Standard plasterboard is vulnerable to mould and degradation from direct contact with water.

KEY SPECIFICATIONS

- Available in 12.5mm or 15mm thickness.
- Easy to cut, simply score and snap.
- Less than 10% water absorption rate.
- BS EN 520 type H2.
- Requires priming with GTEC Universal Sealer prior to decorating and treating with a PVA Bonding agent prior to plastering.

COMMON APPLICATIONS

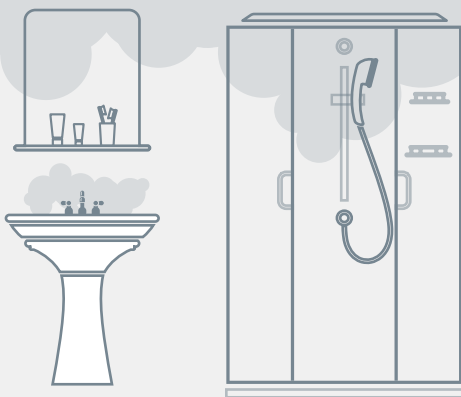
- Kitchen walls/ceilings.
- Toilet room walls/ceilings.
- Low humidity bathrooms (for areas of very high or extreme humidity see Aqua Board).

INSTALLATION METHODS

- Direct Bond installation (see page 7 for details).
- Dryliner wall linings (see page 9 for details).
- Metal or timber stud partitions (see page 11 for details).

KEY ISSUES

1. Moisture/vapour in the air
2. Splashing from sinks



COMMON PROBLEMS – MOULD GROWTH

Where plasterboards are exposed to either direct water contact or prolonged humid conditions mould and damp spots can develop.



Typical example of mould growth on wall using incorrect plasterboard.






Mould can build up and degrades plasterboard. This not only can create health problems, but also can affect the fire/duty performance of the plasterboard.

Moulds produce allergens (substances that can cause an allergic reaction), irritants and sometimes toxic substances. Inhaling or touching mould spores may cause an allergic reaction and respiratory issues.

Note: It is important to treat the problem promptly.

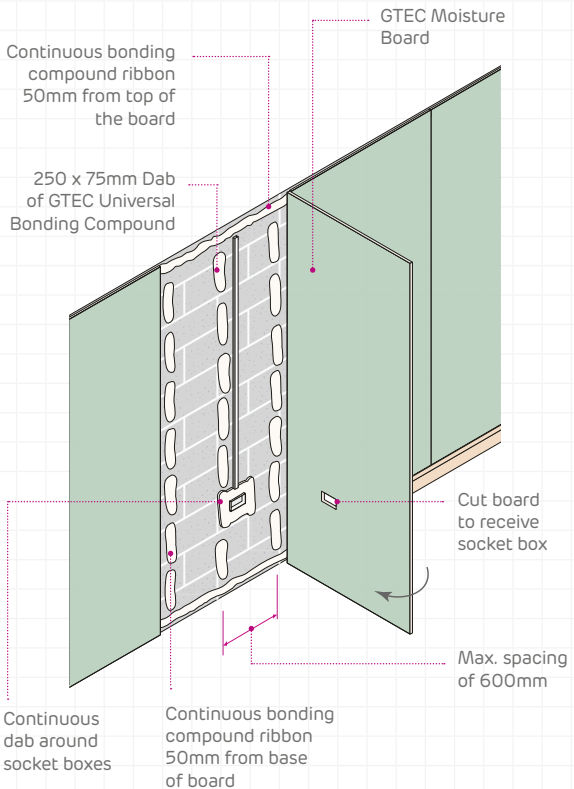
Any areas of mouldy plasterboard should be removed before being replaced with the appropriate plasterboard product, see our recommended usage table for the perfect selection.

RECOMMENDED USAGE

HUMIDITY LEVEL	TYPICAL PLACE	RECOMMENDED BOARD
Normal	Offices, homes	 <p>GTEC Standard plasterboard</p>
Moderate	Kitchens, toilets etc.	 <p>GTEC Moisture Board</p>
High	Bathrooms	 <p>GTEC Moisture Board</p>
Very High	Wet rooms	 <p>Siniat Aqua Board</p>
Extreme	Showers, swimming pools, jacuzzis	 <p>Siniat Aqua Board</p>

HOW TO INSTALL USING DOT & DAB METHOD

Moisture Board can be installed by either Dot & Dab (Direct Bond) or Dryliner method. The Dot & Dab method should only be used for walls that already include a cavity.



INSTALLATION

1. Starting from a window, door reveal or internal angle, mark the wall vertically with a chalk line for the row of dabs.
2. Using GTEC Universal Bonding Compound place a continuous ribbon 50mm at the top and bottom of the board.
3. Then place your Dot & Dabs on the wall making sure that they are 250mm x 75mm in size and at 300mm centres.
4. A maximum spacing of 600mm horizontally should be used. A continuous ribbon should be placed around any plug sockets or light fittings.
5. Press the plasterboard in place against the dabs fitting the board against the ceiling using a wedge or off cut at the base.
6. Tamp the board into place, align with the floor and ceiling chalk lines using a straight edge. Remove wedges when compound has dried (allow 8 hours).
7. Finish boards as per instructions at the back of this guide.

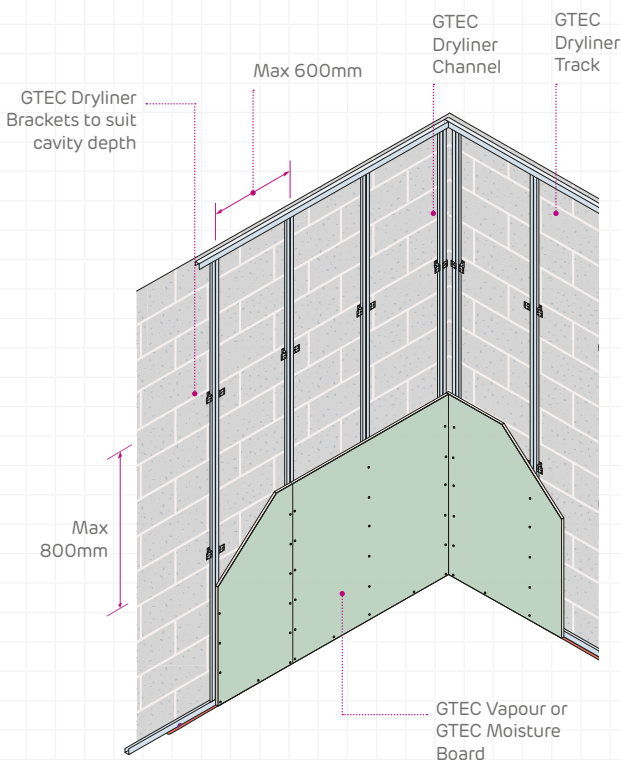


Check out our Dot & Dab 'How To' video on our dedicated Siniat UK Channel:
youtube.com/siniatukchannel

Note: Do not use this installation method for installing Vapour Board.

HOW TO INSTALL USING WALL LINING METHOD

The dryliner method should be used when upgrading an existing solid wall or to create a cavity.



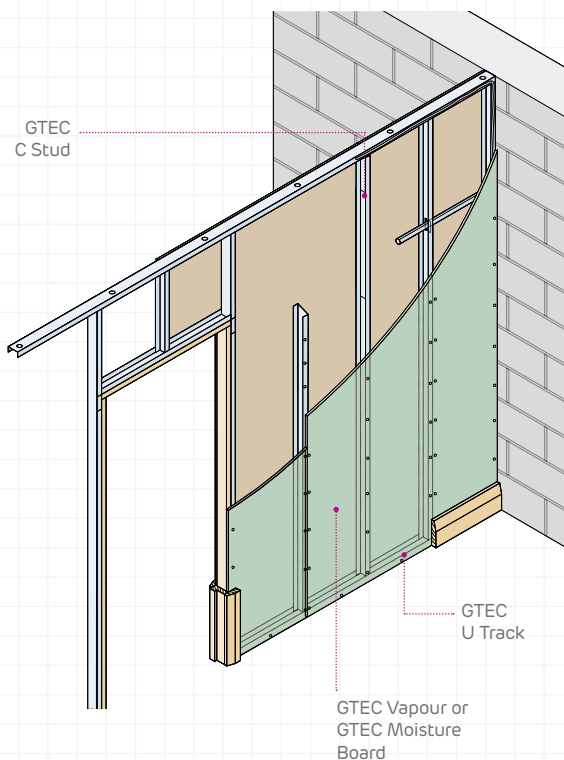
Check out our Covering Uneven Walls 'How To' video on our dedicated Siniat UK YouTube Channel:
youtube.com/siniatukchannel

INSTALLATION

1. Fix a dryliner track at 600mm centres to the floor and ceiling using suitable fixings. Allow for required cavity of at least 25mm.
2. If applying direct to new concrete floors make sure that the surface is dry and a damp proof membrane has been used. Ensure that the large flange of the Dryliner Track is on the plasterboard side.
3. Mark vertical lines at 600mm horizontal centres to fix the dryliner channels.
4. Start at the centre of the wall and position the Dryliner Brackets directly to the wall at a maximum 800mm vertical centres on the marked lines (at shoulder and waist height). Secure using suitable fixings. Fold out the toothed wings of each bracket to form legs.
5. Cut each Dryliner Channel 5mm shorter in height from the floor to the ceiling and place into the dryliner track.
6. Ensure channel is plumb and secure to each bracket using a GTEC Pan Head Self Tapping screw.
7. If installing kitchen units, install a GTEC Fixing Channel or timber reinforcement at the height the wall and floor units need to be secured.
8. Cut plasterboard 5mm shorter than the floor to ceiling height. Butt the board firmly against ceiling and fix with GTEC Drywall Self Tapping Screws at 300mm centres. Screws must be at least 10mm longer than the board thickness.
9. Butt the plasterboard edges lightly against each other and centre the edges over the channels.
10. Finish boards as per instructions at the back of this guide.

Note: Cannot be used for cavities over 130mm.

HOW TO INSTALL A METAL STUD PARTITION



INSTALLATION

1. Fix U Track to ceiling and floor at the desired location starting at the adjoining wall. Use the C Studs to assist in aligning ceiling and floor studs if required.
2. Starting at the adjoining wall end cut each C Stud 5mm shorter in height from the floor to the ceiling and place into the U track and screw to the wall at 300mm centres using suitable fixings.
3. Cut each of the remaining studs individually leaving each one 5mm short, place in U Track but do not fix into position so it can be moved during board installation.
4. Starting with half a board cut the board 5mm shorter than the floor to ceiling height. Butt the board firmly against ceiling and wall and fix with GTEC Drywall Self Tapping screws at 300mm centres. Move the unsecured stud to the end of the board allowing room for the next board to be attached.
5. Moving to the other side of the partition install a full board marking the centre line and moving the next stud into location at the end of the board. Fix screws at 300mm centres on all 3 studs.
6. Continue with full boards cutting 5mm shorter in length marking the centre of board to highlight the location of each centre stud, installing on alternate sides of the partition for each board. This will set the stud locations perfectly and negate the need for measuring each one individually.
7. Finish boards as per instructions at the back of this guide.

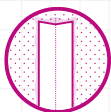


Check out our Building A Metal Partition 'How To' video guide on our dedicated Siniat UK YouTube Channel:
[youtube.com/siniatukchannel](https://www.youtube.com/siniatukchannel)

HOW TO FINISH THE BOARDS

Taping and Jointing is a simple finishing solution for drylining installations, to reinforce joints to prevent cracking and ensure fire and sound performances are achieved. It is suitable for areas of plasterboard where speed and ease of application can greatly reduce installation time and costs versus a skim finish.

RECOMMENDED 3 STAGE PROCESS



BEDDING AND FILL COAT

Tape or bead is bedded into the compound and taper filled out.



1ST FINISH COAT

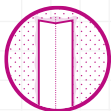
The taper is re-filled with compound where required.



2ND FINISH COAT

Final compound layer is applied and sanded for a smooth finish.

2 STAGE PROCESS



BEDDING AND FILL COAT

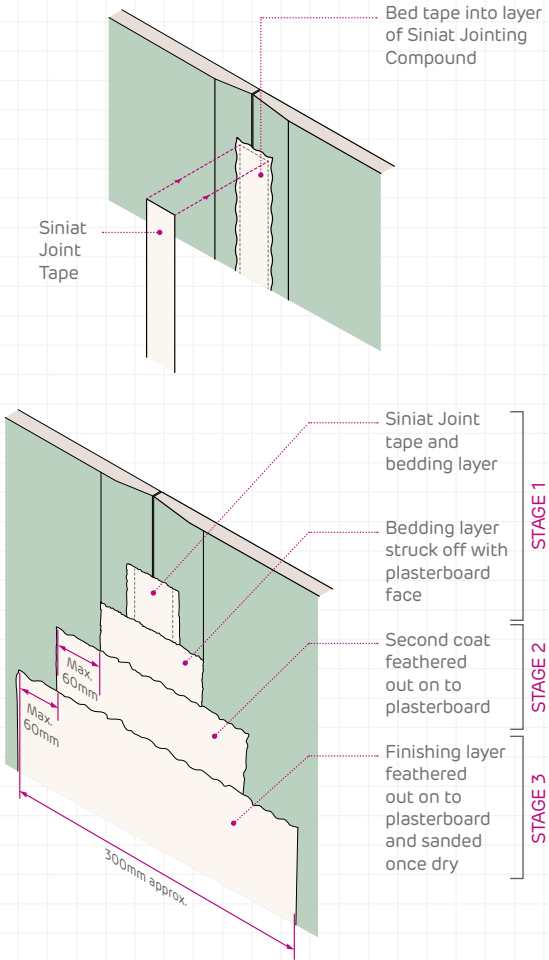
Tape or bead is bedded into the compound and taper filled out.



2ND FINISH COAT

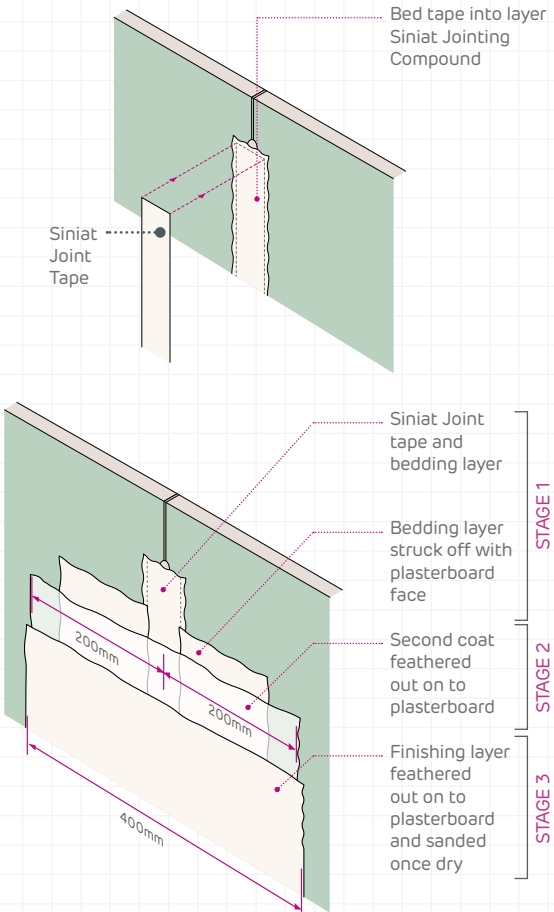
Final compound layer is applied and sanded for a smooth finish.

TAPERED EDGE



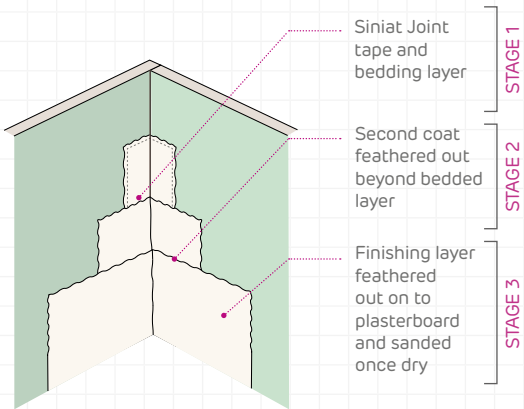
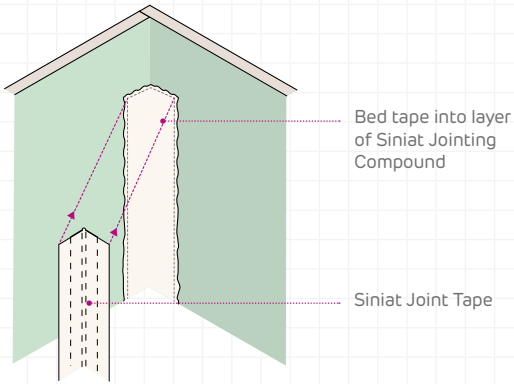
- Boards must be stored in a dry environment
- Ensure surfaces are clean and dry before securely and evenly fixing.
- Tapered edge board provides the best finish by allowing the Joint Tape to sit below the finished surface.
- Square edge plasterboard may also be jointed using the method on the following page.

SQUARE OR CUT EDGE



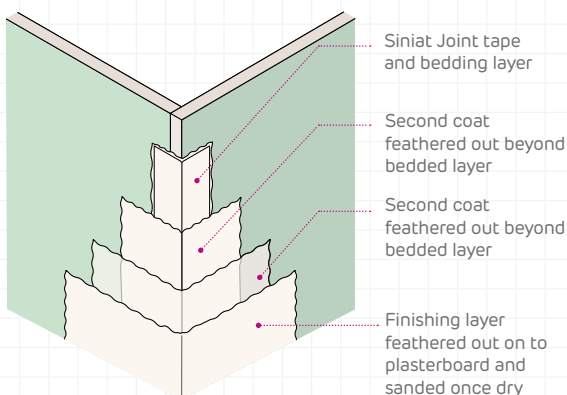
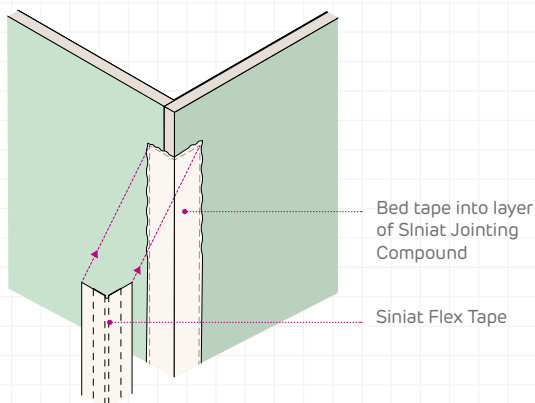
- Correct screw fixings to be used with screw heads just below surface of board.
- Gaps over 3mm to be filled with Siniat Joint Filler or Siniat MultiPurpose Joint Compound prior to tape installation.

INTERNAL CORNER



- Compound to be applied in nominal 1mm layers. Thicker layers will extend drying time.
- Siniat Joint Tape cut to length to be pressed into bedding compound.
- Second coat of jointing compound if required to be applied over dry joint, feathered out 50 – 60mm beyond the edge of first coat.
- Finishing coat of compound feathered out 50 – 60mm beyond second coat.
- Finished, dry joint to be sanded to smooth finish for sealing and decoration.

EXTERNAL CORNER



Square edge joints only:

Joint width to be wider to reduce visible crowning.

External corners only:

Siniat Flex Tape to be applied in place of Siniat Joint Tape as reinforcement.

DRYWALL AND UNIVERSAL SEALER



Once the taping and jointing process has been completed, Universal Sealer must be applied to prevent 'regency striping'. When using Siniat Aqua Board, Drywall Sealer must be applied prior to painting/tiling in severe moisture areas.

REGENCY STRIPING



This term is used to describe the effect of the paint finish reacting differently on the joints to the surface of the board (suction). If the sealer is not applied the joints may be visible no matter how well the taping and jointing process has been completed. Once dry, a paint finish can be applied in the normal manner.



INSTALLATION TIPS

For a step-by-step video guide and installation tips on Direct Bonding (Dot & Dab), Dryliner and stud partition systems, check out our Siniat UK YouTube Channel.

youtube.com/siniatukchannel



For advice with installation:
Contact **Technical Services** at:
technical.siniat@etexbp.co.uk
or call: **0800 145 6033**

siniat.co.uk

**Etex Building
Performance Limited**
Marsh Lane,
Easton-in-Gordano,
Bristol, BS20 0NE
+44 (0) 1275 377 773

